



Engineered Plastics Company

**Our ingenuity helps customers
optimize designs for manufacturing,
assembly and part weight reduction.**

Over **100,000,000**
components formed
each year

Key Products

Insert Molded Products including Fasteners

Functional Engineered Plastic

Molding and Assembly

Seals and Bumpers including Automotive Hood Leveling



MacLean-Fogg
COMPONENT SOLUTIONS

Who We Are

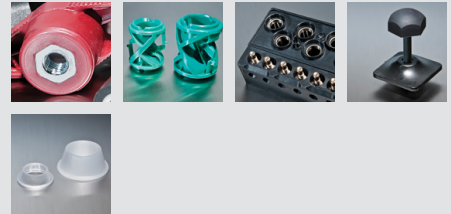
At Engineered Plastics Company, our specialty is Close Tolerance Engineered Functional Plastics. We work with our customers to optimize components to reduce cost, reduce weight and maximize customer value. Engineered Plastics Company was founded in 2012 by merging two successful and complementary plastic injection molding businesses; Engineered Plastics Corp. in Menomonee Falls, WI and MacLean-Fogg's Polymer Technologies in Whitewater, WI.

What We Do

At MacLean-Fogg Component Solutions' Engineered Plastics division, our expertise is in the design, molding and assembly of functional engineered plastic and insert molded components. Our expertise provides us with the capability to mold a wide range of engineering grade resins. Our specialty is working with customers to provide value-add engineering support by helping customers optimize designs for manufacturing, assembly and part weight reduction.

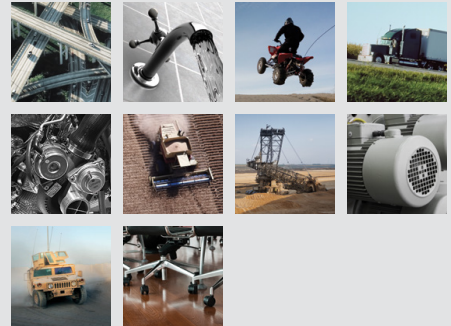
Key Products

Insert Molded Products including Fasteners
Functional Engineered Plastic
Molding and Assembly
Seals and Bumpers including Automotive
Hood Leveling



Industries Served

Automotive
Water Treatment
Recreational Vehicles
Heavy-Duty Truck and Trailer
Industrial Engine
Agriculture
Off Highway
Industrial Motors
Military and Defense
Furniture



Core Competencies

Plastic Injection Molding
Insert Molding
Secondary Processes including Machining,
Welding, and Assembly



© Copyright 2017, MacLean-Fogg Component Solutions. All rights reserved. MacLean-Fogg Component Solutions and the MacLean-Fogg Component Solutions logo are trademarks of MacLean-Fogg Company.

W142 N9078 FOUNTAIN BLVD, MENOMONEE FALLS, WI 53051
420 NORTH UNIVERSAL BLVD, WHITEWATER, WI 53190

P 248.853.2525 MFCS@MACLEANFOGG.COM macleanfoggcs.com



MacLean-Fogg
COMPONENT SOLUTIONS